

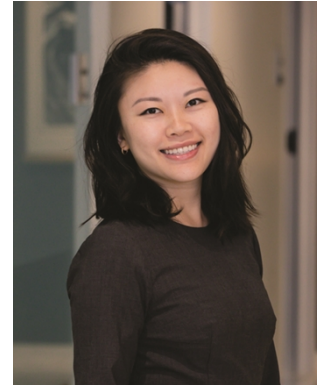
Jenny Jieru Wang

Associate

+1 919 862 2249

jenny.wang@alston.com

Raleigh | 555 Fayetteville Street, Suite 600 | Raleigh, NC 27601-3034



Jenny Wang is an associate with Alston & Bird’s Intellectual Property Litigation Group. She has experience representing clients across a variety of industries with patent disputes in district courts as well as the International Trade Commission (ITC).

Jenny earned her J.D. from Duke University, where she served as an editor on the *Duke Law Journal*. She also advocated for children with disabilities and special needs in the Children’s Law Clinic at Duke.

Education

- Duke University (J.D., M.A., 2019)
- Duke University (B.S., 2014)

Languages

- Spanish

Admitted to Practice

- California
- District of Columbia
- U.S. Patent and Trademark Office
- North Carolina (Not Admitted)

Related Services

Intellectual Property | Intellectual Property Litigation | Patent Litigation